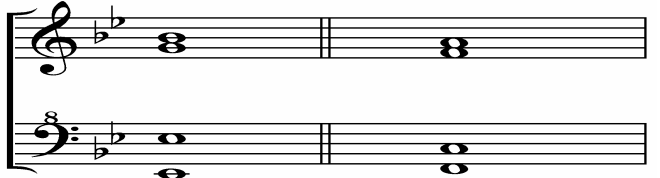


## MAJOR TONALITIES (SIX CHORDS)



### 1. MAJOR TRIAD (M3 plus a m3: 1-3-5)

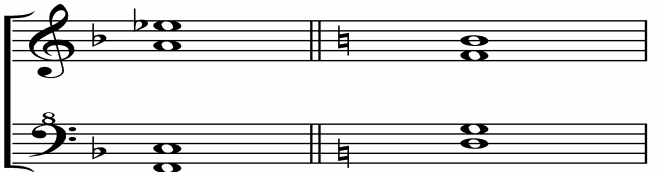
- Very strong chord
- 3 different notes
- 1 note doubled (root, occasionally 5<sup>th</sup>)
- Bass on: 1) root 2) 5<sup>th</sup>



### 2. BARBERSHOP (OR DOMINANT) 7<sup>TH</sup>

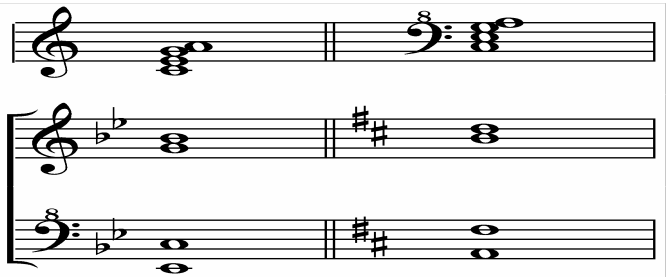
(Major triad plus a m3: 1-3-5-7<sup>b</sup>)

- Very strong chord
- 4 different notes
- Bass on: 1) root/5<sup>th</sup> (equally strong)  
2) 7<sup>th</sup> 3) 3<sup>rd</sup>



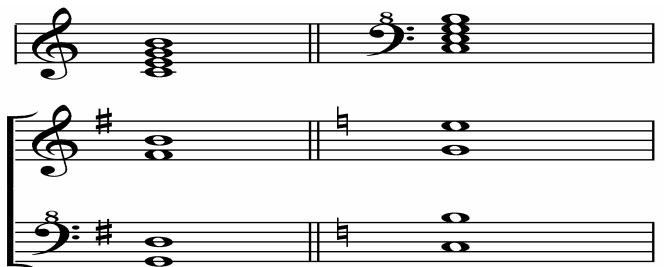
### 3. MAJOR 6<sup>TH</sup> (Major triad plus a M2: 1-3-5-6)

- Weak chord; modern flavor
- 4 different notes
- Check bass note to identify
- Bass on: 1) root 2) 5<sup>th</sup>



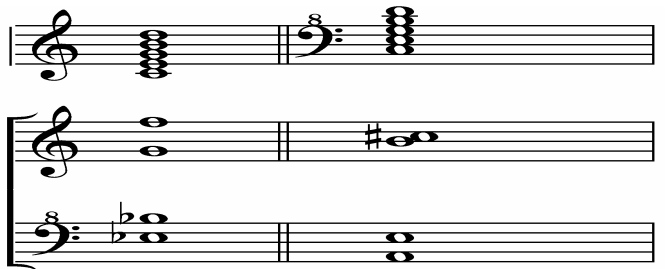
### 4. MAJOR 7<sup>TH</sup> (Major triad plus a M3: 1-3-5-7)

- Dissonant; weak; avoid
- 4 different notes
- Passing chord with melody on 7<sup>th</sup> (“ti”)
- Bass on: 1) root



### 5. MAJOR 9<sup>TH</sup> (Major triad plus a P5: 1-3-5-9)

- Weak chord
- 5 different notes: omit the 7<sup>th</sup>
- Used when melody is on the 9<sup>th</sup> (“re”)
- Bass on: 1) root



### 6. DOMINANT 9<sup>TH</sup> (Major triad [with one note omitted] plus a m3 and a M3: ~~X~~-3-5-7<sup>b</sup>-9 or

1-3-~~X~~7<sup>b</sup>-9)

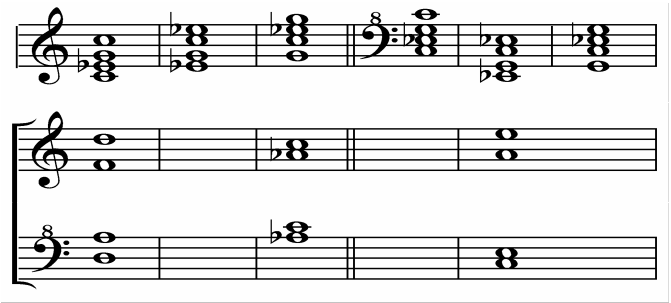
- Strong chord
- 5 different notes: omit either the root or the 5<sup>th</sup>
- Bass on: 1) omit root: bass on 5<sup>th</sup> 2) omit 5<sup>th</sup>: bass on root



## MINOR TONALITIES (THREE CHORDS)

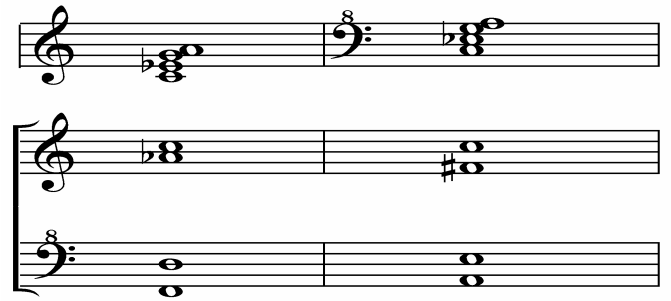
### 7. MINOR TRIAD (m3 plus a M3: 1-3<sup>b</sup>-5)

- Weak chord
- 3 different notes
- 1 note doubled (anything)
- Bass on: 1) root 2) 5<sup>th</sup> 3) 3<sup>rd</sup>



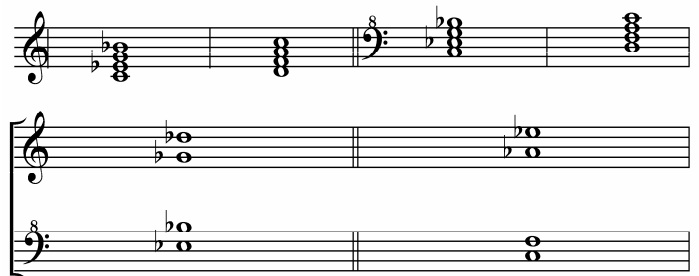
### 8. MINOR 6<sup>TH</sup> (a minor triad plus a M2)

- Weak chord
- 4 different notes
- Bass on: 1) root 2) 3<sup>rd</sup>; 5<sup>th</sup>, 6<sup>th</sup>



### 9. MINOR 7<sup>TH</sup> (a minor triad plus a m3: 1-3<sup>b</sup>-5-7<sup>b</sup>)

- Weak chord
- 4 different notes
- Check bass note to identify
- Bass on: 1) root 2) 5<sup>th</sup>



## SYMMETRICAL CHORDS (TWO CHORDS)

### 10. DIMINISHED (three minor 3rds: 1-3<sup>b</sup>-5<sup>b</sup>-7<sup>bb</sup>)

- Weak chord, but used frequently
- 4 different notes
- Often deliberately spelled wrong
- All minor 3rds
- Only 3 possible combinations
- Any note can be the root
- Bass on: 1) anything



### 11. AUGMENTED (two Major 3rds: 1-3-5<sup>#</sup>)

- Weak chord
- 3-note chord
- Double anything
- Often deliberately spelled wrong
- All Major 3rds
- Only four possible combinations
- Consider the doubled note to be the root
- Bass on: 1) anything

