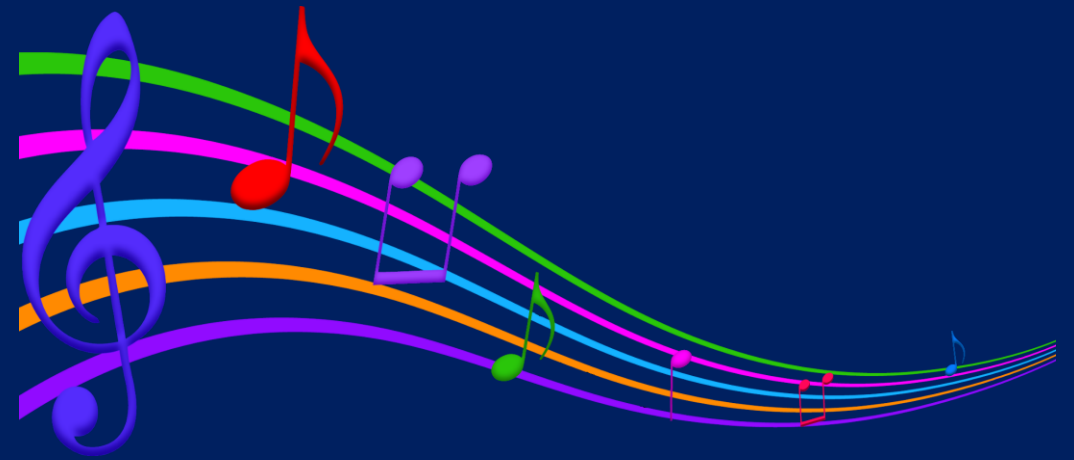
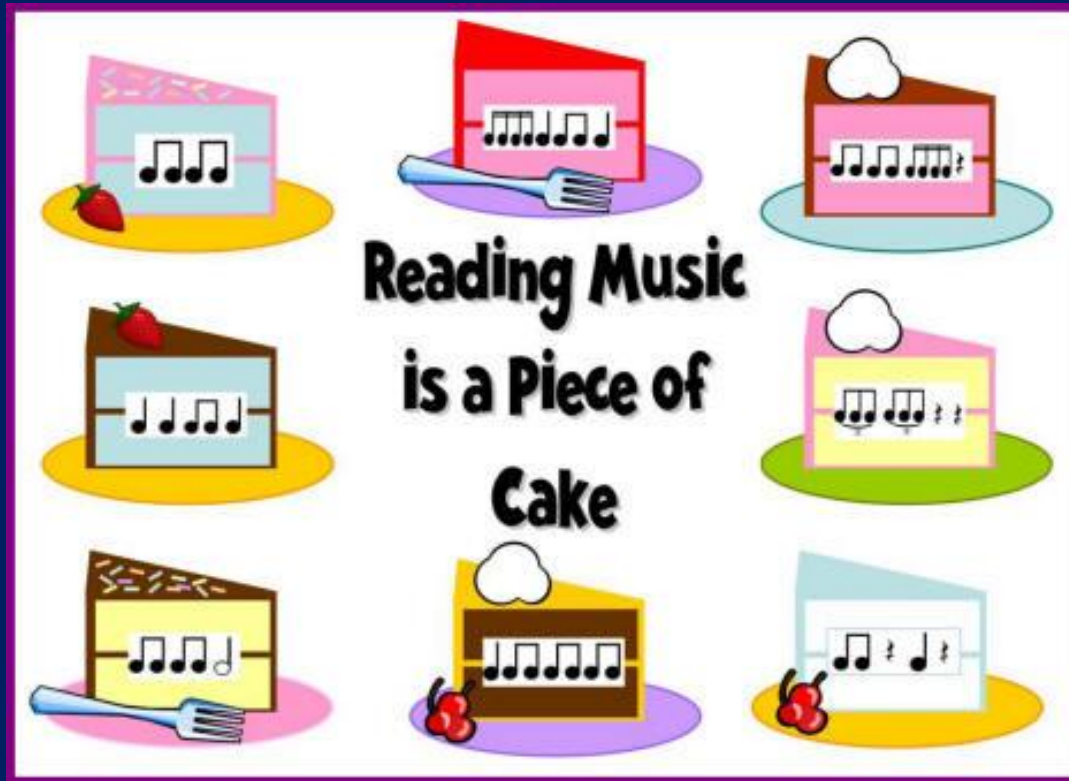


Sheet Music Reading for Beginners



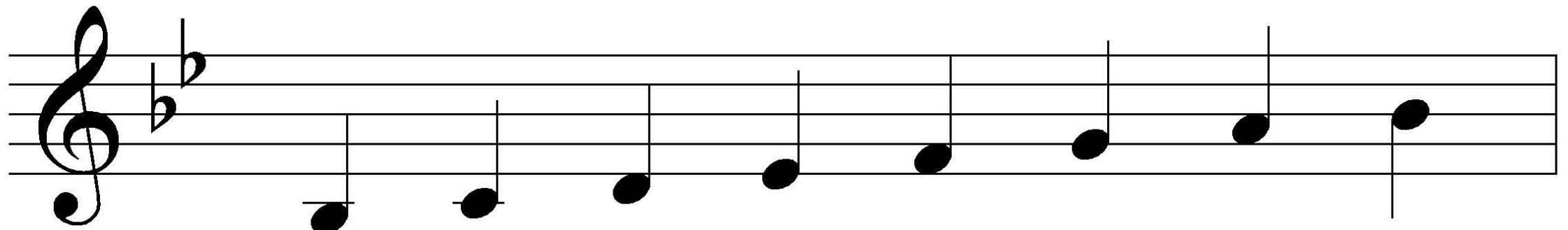
Jean Flinn
singjean6@gmail.com

Sheet Music Reading for Beginners

8 Easy Steps to Sight – Singing

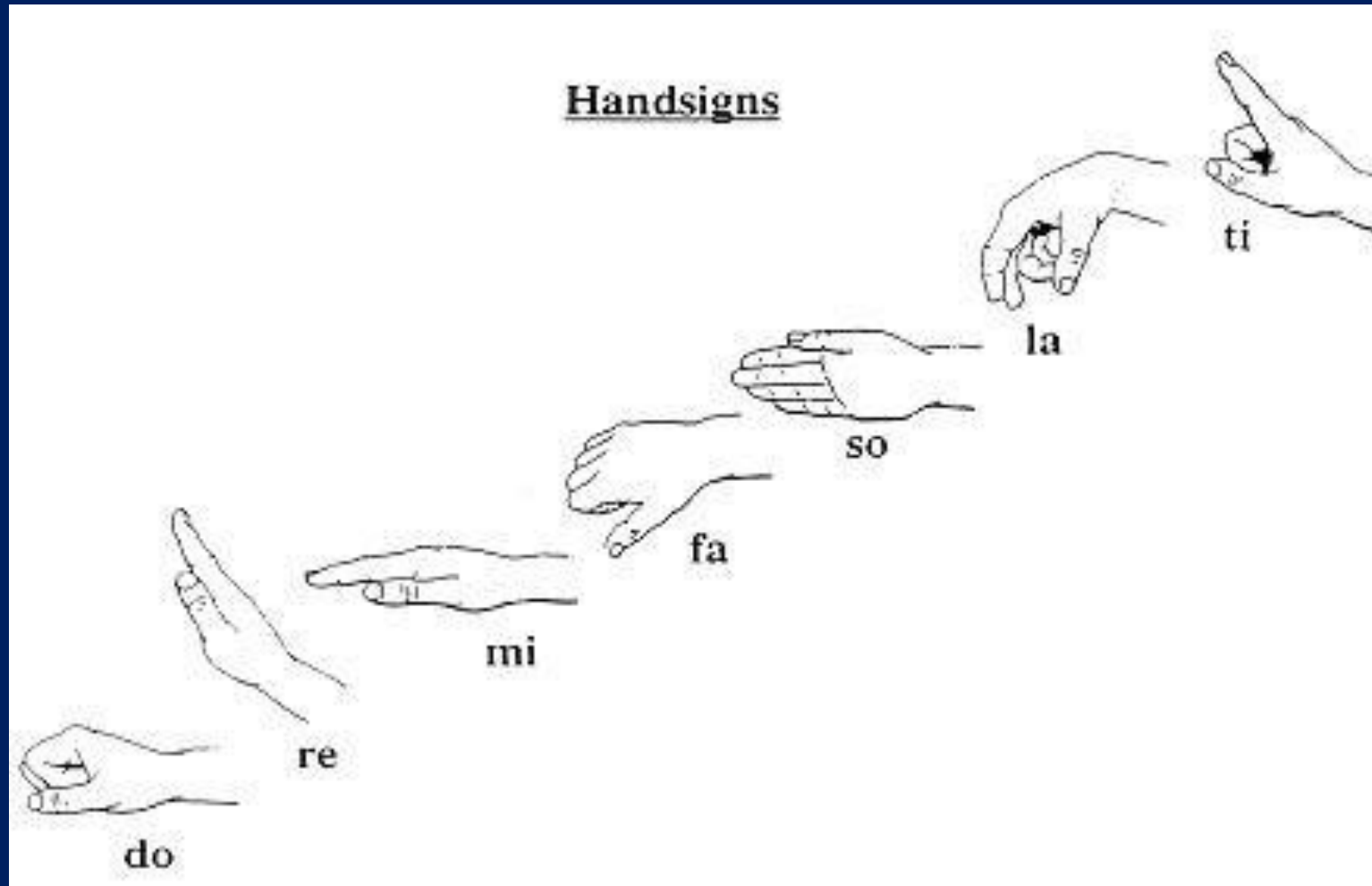
1. Find “Do.”
2. Name the pitches with solfege syllables.
3. Sing the rhythm using a syllable of your choice on one pitch.
4. Find the pitch for “Do.”
5. Sing the scale in that key, using the solfege hand signs.
6. Sing the melody with solfege syllables and hand signs.
7. Sing the melody AND the rhythm.
8. Add the words to the melody.

Solfege Syllables


















1	2	3	4	5	6	7	1
Do	Re	Mi	Fa	Sol	La	Ti	Do
B \flat	C	D	E \flat	F	G	A	B \flat

Curwen Hand Signs







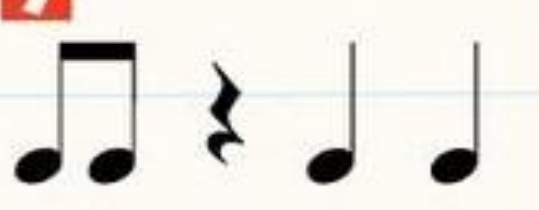




Rhythmic Identification

NOTE & REST CHART

Name	Note	Rest	Beats	1 $\frac{4}{4}$ measure
Whole			4	
Half			2	
Quarter			1	
Eighth			$\frac{1}{2}$	
Sixteenth			$\frac{1}{4}$	

Rhythmic Identification

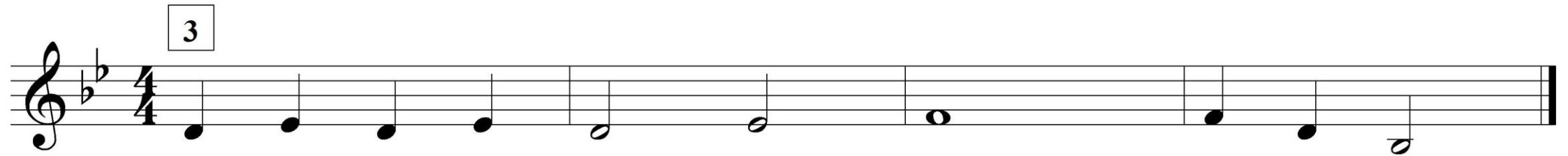
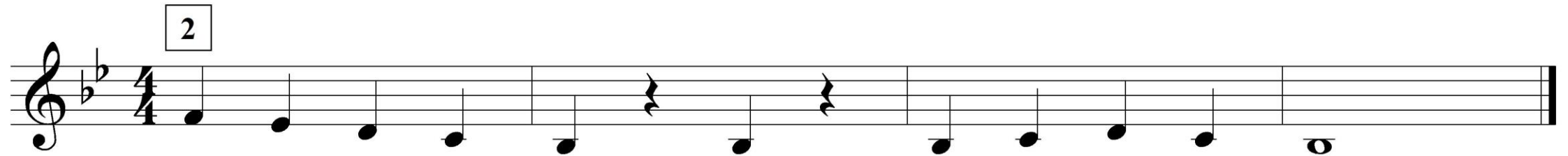
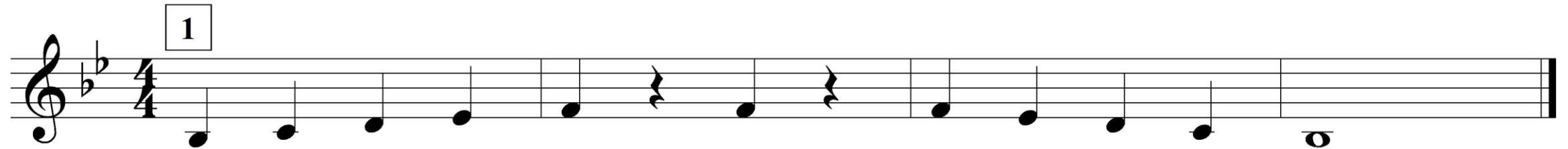
1 	2 	3 
4 	5 	6 
7 	8 	9 

RHYTHM GUIDE

 <p>HOT DOG</p> 	 <p>GRAPE SODA</p> 	 <p>APPLE PIE</p> 	 <p>HOT FUDGE SUNDAE</p> 	 <p>COCONUT SHRIMP</p> 
 <p>RICE KRISPIE TREAT</p> 	 <p>CHOCOLATE STRAWBERRY</p> 	 <p>CINNAMON OATMEAL</p> 	 <p>MILK AND CEREAL</p> 	 <p>AVOCADO TOAST</p> 
 <p>CHEESE RAVIOLI</p> 	 <p>STRAWBERRY ICE CREAM</p> 	 <p>CHIPS AND GUACAMOLE</p> 	 <p>TATER TOT CASSEROLE</p> 	 <p>PEPPERONI PIZZA</p> 

A couple of tricky ones here! Be sure to say “RA-violi” and “GUAC-amole” on the downbeats!

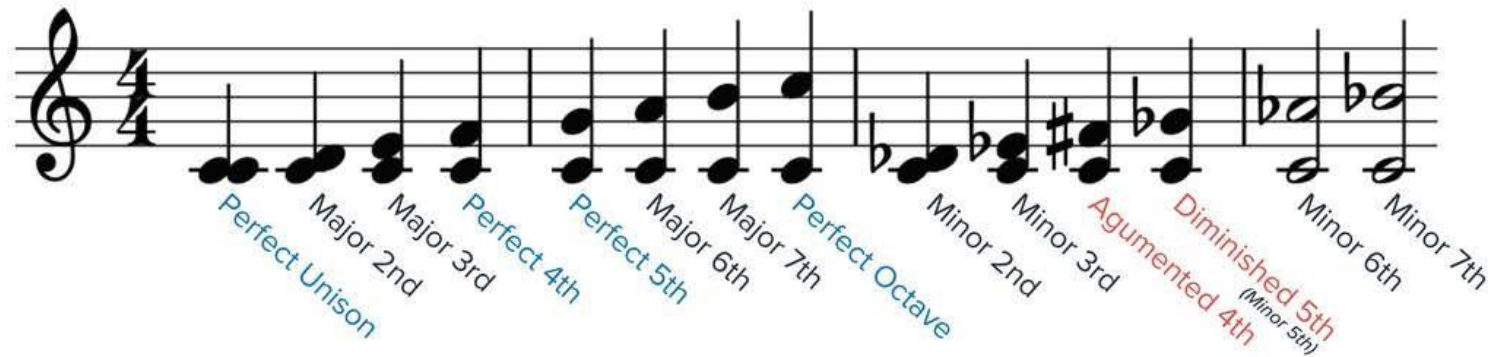
Sight – Reading Samples



Intervals

INTERVALS—The distance between one note and another

Interval examples using C as the root note. (Note—Augmented 4th and Diminished 5th are essentially the same note and are generally identified as the tritone)



Intervals are not always easy to name when the bottom note is something other than a C! It helps me to identify intervals if I remember the intervals with ODD numbers (3rd, 5th, 7th) are line-to-line or space-to-space; the intervals with EVEN numbers (2nd, 4th, 6th) are line-to-space or space-to-line. Then I just have to figure out if the interval is a major/perfect or minor! It takes LOTS of practice; using a piano keyboard helps.

Pick the songs YOU know and create YOUR OWN interval song chart at:

<https://www.earmaster.com/products/free-tools/interval-song-chart-generator.html>

Intervals

Here's mine:

My interval song chart

Interval	Ascending	Descending		How many 1/2 steps ?	Another way to calculate
Minor 2 nd	Jaws (Theme)	Shall We Dance (The King and I)	m2	1	1/2 step
Major 2 nd	Happy Birthday to You	Yesterday (The Beatles)	M2	2	1 whole
Minor 3 rd	Lullaby (Brahms)	This Old Man	m3	3	1W+1H
Major 3 rd	Oh, when the Saints	Swing Low Sweet Chariot	M3	4	2W
Perfect 4 th	Here comes the Bride - Wedding March (Wagner)	Born Free (Movie theme by John Barry)	P4	5	2W+ 1H
Tritone	Maria (West side story)		Tritone	6	3W
Perfect 5 th	Twinkle Twinkle Little Star (Mozart)	Flintstones theme	P5	7	3W+1H
Minor 6 th	The Entertainer (Scott Joplin)	Love Story (theme)	m6	8	4W
Major 6 th	My Bonnie Lies over the Ocean	Over There (George Cohan)	M6	9	4W+1H
Minor 7 th	Somewhere (West side story)	An American in Paris (Gershwin)	m7	10	5W
Major 7 th	Superman theme (1-1-1-7-5,1-1-1-7-5)		M7	11	5W+1H
Octave	Somewhere over the Rainbow (Wizard of Oz)	The Lonely Goatherd (The Sound of Music)	Octave	12	6W

Let's Sight – Read a Tag

Sunshine Is Bidding The Day Goodbye

Musical score for the song "Sunshine Is Bidding The Day Goodbye". The score is written in 4/4 time and features a treble and bass clef. The melody is in the treble clef, and the bass line is in the bass clef. The lyrics are: Sun - shine — is bid - ding the day good - bye. —. The score includes a large oval highlighting the final two measures of the melody.

Sun - shine — is bid - ding the day good - bye. —

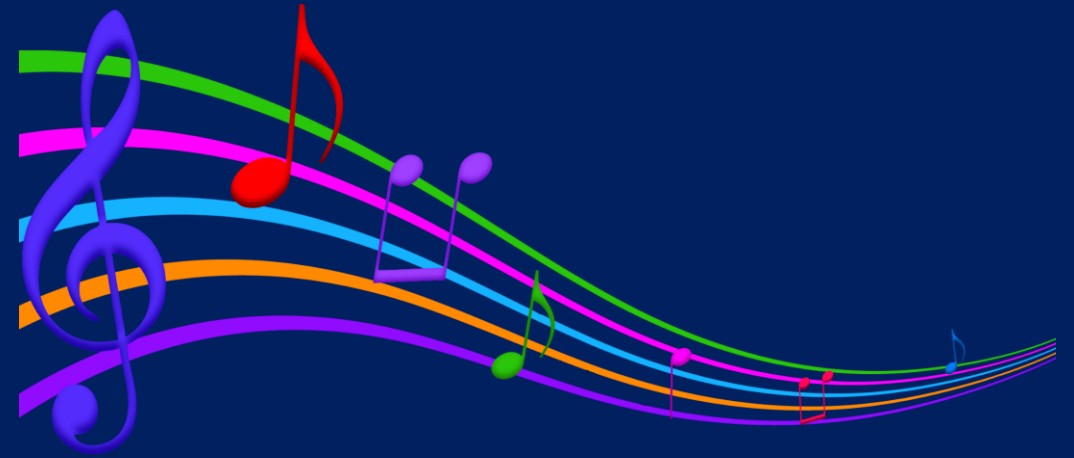
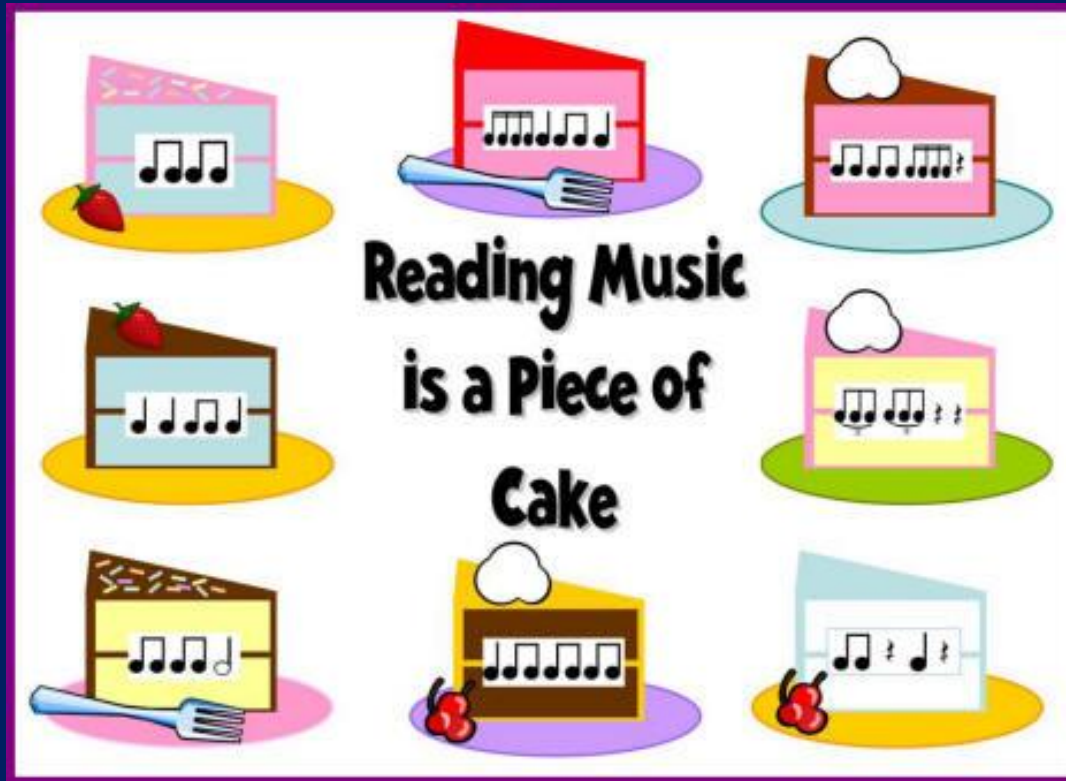


Sunshine Is Bidding The Day Goodbye

Sun - shine — is bid - ding the day good - bye. —

The image shows a musical score for the song "Sunshine Is Bidding The Day Goodbye". It consists of two staves: a treble clef staff on top and a bass clef staff on the bottom. The key signature has two flats (B-flat and E-flat), and the time signature is 4/4. The melody is written in the treble clef, and the bass line is in the bass clef. The lyrics "Sun - shine — is bid - ding the day good - bye. —" are written below the treble staff. The score ends with a double bar line.

Sheet Music Reading for Beginners



Jean Flinn
singjean6@gmail.com